

IPC Global®

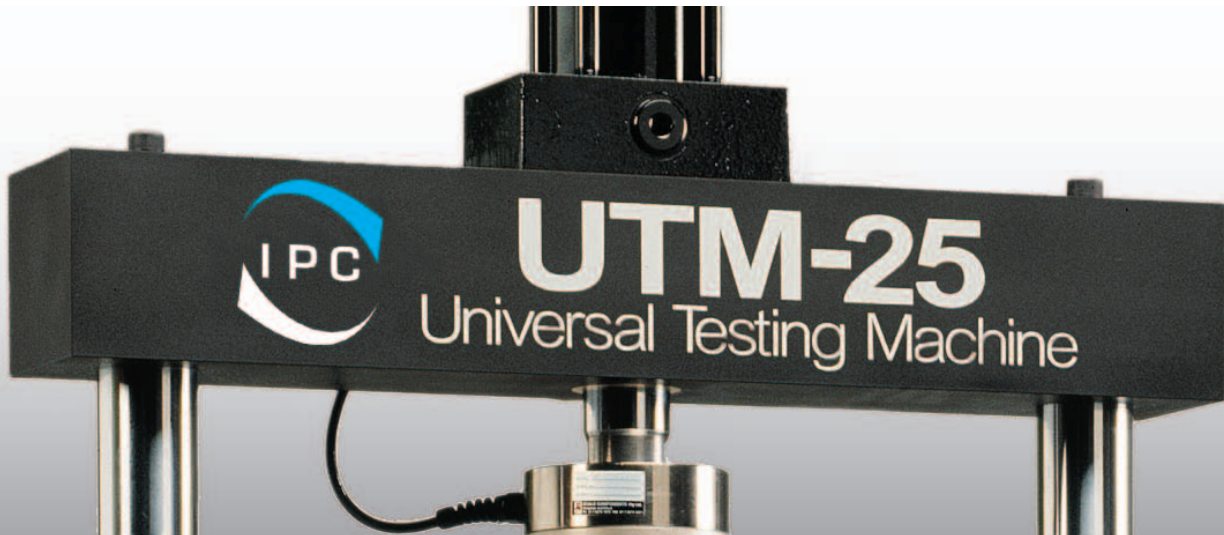
UTM 25

Servo-hydraulic Universal Testing System

(pictured with optional environmental chamber and accessories)



The science
of testing
made easy®



IPC Global's UTM-25 servo-hydraulic testing system is precision engineered to accomplish your toughest research challenges. Designed and built to IPC Global's highest standard for Civil Engineering laboratories, UTM-25 delivers superior reliability and accuracy with proficient performance of tension, compression and dynamic loading analyses on all types of material. Harnessing the precision of IPC Global's renowned IMACS digital controller and the user-friendly, powerful UTS software, you'll have absolute confidence in your materials analysis. IPC global supplies a wide range of test fixtures, displacement transducers and environmental chambers to complement the UTM-25, thus creating a complete turnkey solution that streamlines your materials testing.

MAIN FEATURES

Control and Data Acquisition:

The system uses IPC's world class IMACS digital controller and UTS software with test modules for international and local standards ensuring it is easy to set up and conduct your tests.

IPC Global's Integrated Multi-Axis Control System (IMACS) delivers leading-edge performance, unparalleled real time control and the ultimate in flexible data acquisition. The IMACS provides excellent waveform fidelity from integrated acquisition and control functions, at speeds of up to 5kHz simultaneously on all channels, with 4x oversampling for low noise performance and auto-ranging resolution of up to 20bit.

Developed over 20 years, IPC Global's test and control software (UTS) is known for its simplicity in use, clarity of results and analytical power. UTS allows for real time graphing of results and configurable real time transducer levels screen, as well as customisable test templates to streamline the testing process.

Hydraulic Power Supply:

A range of hydraulic power supplies are available to suit test requirements. The standard configuration features a remote starting air-cooled pump 5 litres/min at 160 Bar, 3µm return line filtration, low oil, over temperature and dirty filter indication.

Hydraulic Service Manifold:

The HSM provides electronically adjustable oil pressure reduction in the range of 5 Bar to 160 Bar, allowing for greater control and safety. The HSM provides a local oil accumulator to further improve control accuracy. The 3µm pressure line filter ensures long-life system protection.

Environmental Chamber:

IPC provides the option of a temperature control chamber, allowing for analysis on materials to be performed at non-ambient temperatures.

Full Set of Accessories Available:

A virtually limitless range of testing accessories is available for the UTM-25 system including grips, compression platens, tri-axial cells, indirect tensile fixtures, transducers, jigs and other customer specified items.



Control and Data Acquisition



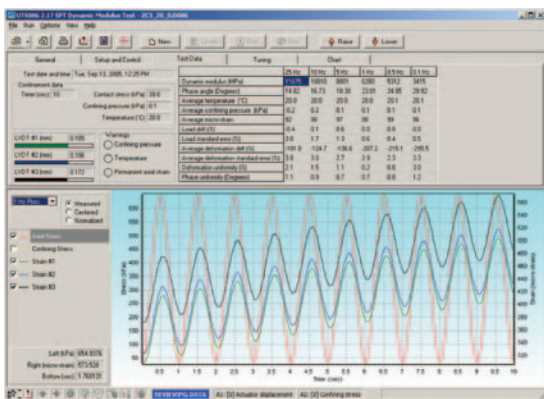
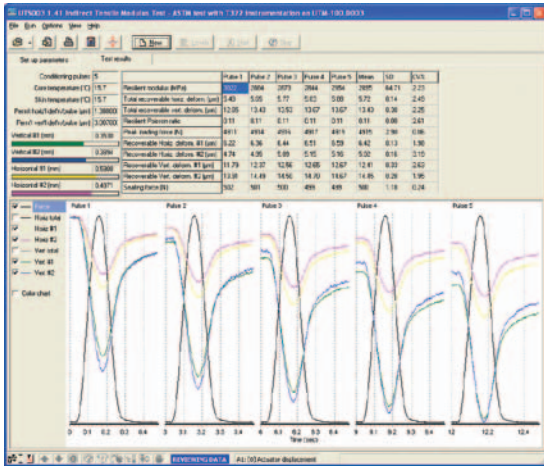
Hydraulic Power Supply



UTM-25 with Environmental Chamber



Harnessing the precision of IPC Global's renowned IMACS digital controller and the user-friendly, powerful UTS software, you'll have absolute confidence in your materials analysis.



Easy to read graphics screens for test set-up and reviewing results.

SPECIFICATIONS

Features

- Rigid 2-column 25kN load frame
- Precision engineered for high stiffness and alignment
- Double acting high precision servo-hydraulic actuator
- High performance servo valve allows sinusoidal loading frequencies beyond 70Hz
- Motorised crosshead positioning
- Hydraulic crosshead clamping
- Fully customisable to suit a large range of testing applications
- 2 axis control and 8 channel data acquisition as standard, upgradeable up to 8 axes control and 32 channel acquisition

Load Frame

Load Capacity: $\pm 25\text{kN}$ Static
 $\pm 20\text{kN}$ Dynamic

Frequency: Up to 70Hz

Axis of Control: 2 Std expandable up to 8 Optional

Data Acquisition Channels: 8 Std expandable up to 32

Between Columns: 450 mm

Vertical Space: 800 mm

Stroke: ± 25 mm

Size: 1850(H) x 580(D) x 660(W) mm

Weight: 130kg

Hydraulic Power Pack

Size: 810(H) x 600(D) x 700(W) mm

Weight: 100kg (without oil)

Flow Rate: 5 litres/min

High Pressure: 160 Bar

Low Pressure: 5 to 160 Bar (adjustable)

Mains: 1.5kW 3 phase
230V 50Hz or 208V 60Hz

IMACS Controller

Size: 270(H) x 350(D) x 460(W) mm

Weight: 11kg

Mains Power: 220V-240V or 110-120V 50/60Hz



Above: Indirect Tensile Fixture

IPC Global Customer Care

At IPC Global we are proud of our products.

We're dedicated to supplying high quality, accurate, affordable, easy-to-use systems for advanced testing of asphalt, soil, unbound granular and other construction materials.

As a valued customer of IPC Global you will receive continuous, expert support and advice for your instrument. Furthermore, we ensure new users are trained in the correct operation of your IPC Global equipment.

For support from our expert customer care team, contact your local IPC Global distributor or IPC Global directly on +61 3 9800 2200 or email techsupport@ipcglobal.com.au.

Visit our website for more information:
www.ipcglobal.com.au

Disclaimer:

The design and specifications of any IPC Global product may be subject to change without notice.

© 2010 IPC Global – UTM25.0810



The science of testing **made easy**®

www.ipcglobal.com.au

4 Wadhurst Drive, Boronia, Victoria 3155, Australia T +613 9800 2200 F +613 9800 2813 E sales@ipcglobal.com.au